



United International University

Name (Optional)

Nusaiba Zaman Manifa

ID No.

0 1 1 2 0 1 1 5 5

Section

B

Invigilator's Signature with date

Course Code

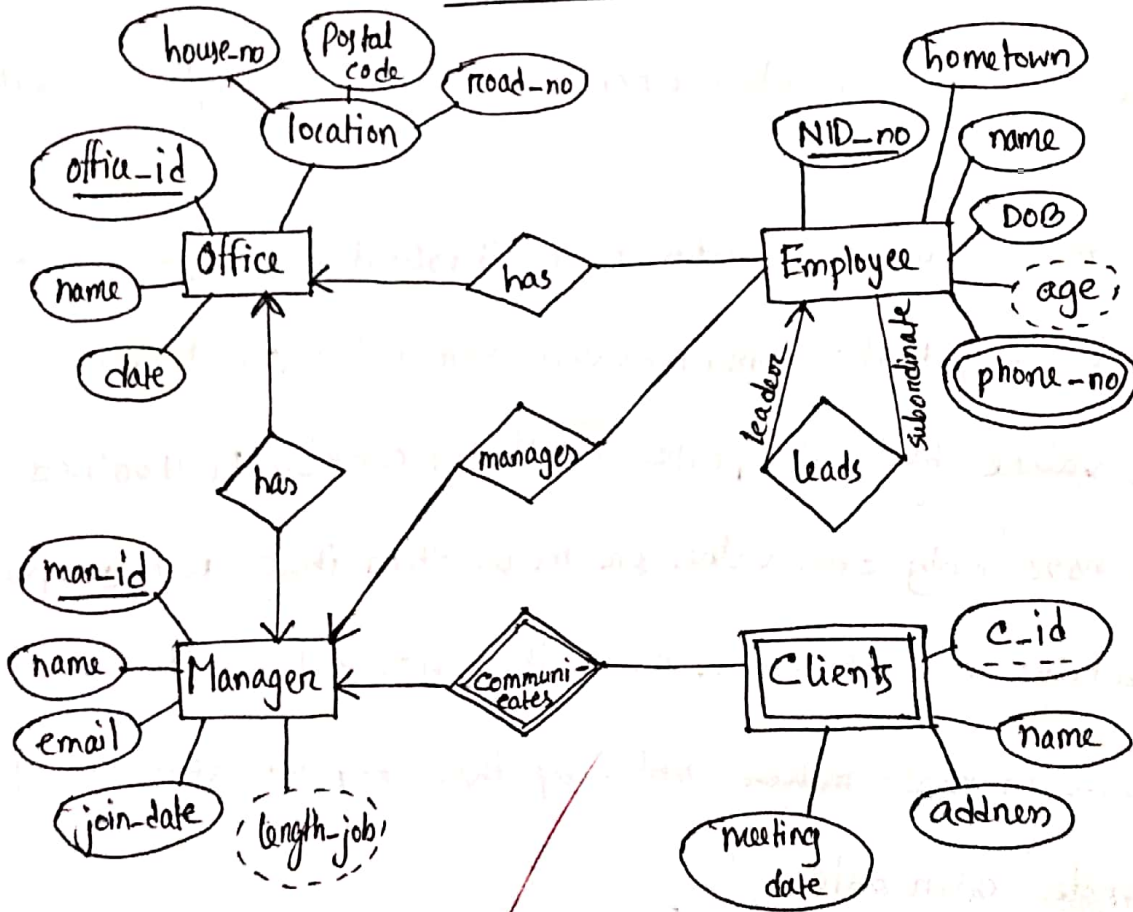
CSE 3521

Trimester : Spring / Summer / Fall, 20.21..

Name of Exam : Class Test / Mid-term 1 / Mid-term 2 / Final

Date: 24/11/2021

Ans to qu.no-1



16

(Ans)

P.T.O

Ans to qu.no - 2

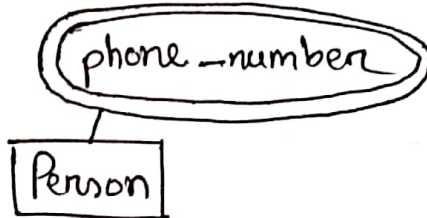
Multivalued attribute : Multivalued attribute is an attribute which ~~has~~ ~~one may have~~ can contain more than one value.

Composite attribute : Composite attribute is the attribute which has more than one attribute which makes up one single attribute.

The main difference between multivalued attribute and composite attribute is that, multivalued attributes can hold more than one value but composite attributes cannot. Multivalued attributes can have only one value or more than that. But composite attribute cannot store more than one value. The number of attributes that ~~make~~ make up the composite attribute points to a single attribute.

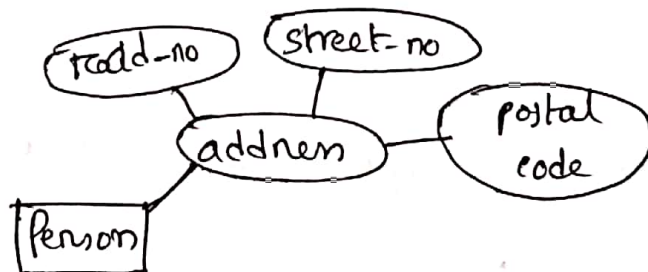
For example, a person can have more than one phone numbers. So, phone number for that person will be a multivalued attribute.

Example of Multivalued attribute :



But in composite attribute it is not the case. For example, an address has street-no, road-no, postal code which makes up the attribute address.

Example of Composite attribute :



(Ans).

2

P.T.O

Ans to au.no-3

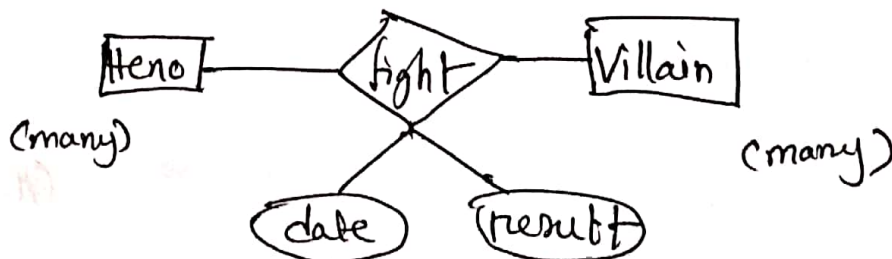
Descriptive attribute is the attribute of the relationship set.

In many to many relationships we can not avoid the descriptive attribute.

In one to one relationships the descriptive attribute can go to any side. In ~~many to~~ one to many relationships it goes to the many side.

But in many to many relationships we can not avoid using descriptive attribute with the relationship set.

Example :



Here, many heroes fight with many villains and the relationship set stores the date and result of the fights.

(Ans).